

Aldora Sofa

CRISTINA CELESTINO



The Aldora Sofa by Cristina Celestino is a contemporary spin on a classical concept. This iconic seater stands out from the crowd because of its sculptural backrest that invites two people to converse for hours on end. The soft feminine shapes are inspired by the graceful petals of calla lilies and has the allure of Milanese bourgeois decadence. With the Aldora Sofa, Christina Celestino created an iconic piece with a wide range of inspirations and a subtle nod to her heritage. The Aldora Sofa is also available as a chaise longue left and chaise longue right. Configure the Aldora Sofa to your personal tastes with the online configurator. Choose from a wide selection of fabrics and leathers and discover what it looks like with our AR tool.

Detailing



With its contemporary spin on a classical concept, and availability in multiple configurations, Aldora finds its way in any modern-day interior

Colours



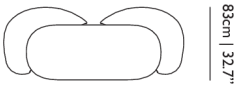
CAT 1

Palette 609 Sage

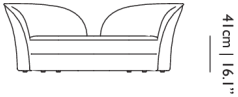
Aldora Sofa / Sofa

Dimensions

205cm | 80.7"



83cm | 32.7"



41cm | 16.1"



78cm | 30.7"

Product

WIDTH 205cm | 80.7"

HEIGHT 78cm | 30.7"

DEPTH 83cm | 32.7"

WEIGHT NETTO 59.1kg |
130.29lbs

Packaging

WIDTH 85cm | 33.5"

HEIGHT 84cm | 33.1"

CUBAGE 1.48m³ | 52.19ft³

LENGTH 207cm | 81.5"

WEIGHT 59.5kg | 131.17lbs

Technical

MATERIAL

Wood and steel frame, foam over steel springs

HEIGHT ARMREST

78cm | 30.7"

SEAT HEIGHT

41cm | 16.1"

WEIGHT CAPACITY

110kg | 242.51lbs

SEAT DEPTH

60cm | 23.6"

SEAT WIDTH

150cm | 59.1"

SEATING CAPACITY

2

Upholstery

ABBRACCI (available in 6 colours)



COMPOSITION
100% PES

ABRASION
30000 martindale
lightfastness 3 - 4
pilling 5

FIRE RESISTANCE
BS 5852 - Ignition source
0 (Cigarette)
BS 5852 - Ignition source
1 (Match flame equivalent)
EN 1021-1 (Cigarette)
EN 1021-2 (Match)
TB 117-2013

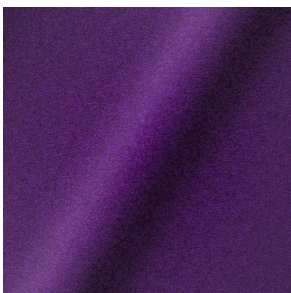
ARDA (available in 12 colours)



ABRASION
50000 martindale
lightfastness 5 - 6
pilling 4 - 5

FIRE RESISTANCE
BS 5852 - Ignition source
0 (Cigarette)
BS 5852 - Ignition source
5 (Crib 5)
BS 5852 - Ignition source
1 (Match flame equivalent)
EN 1021-1 (Cigarette)
EN 1021-2 (Match)
TB 117-2013
EU Ecolabel

DIVINA 3 (available in 56 colours)



COMPOSITION
100% WO

ABRASION
45000 martindale
lightfastness 7
pilling 3

FIRE RESISTANCE
BS 5852 - Ignition source
0 (Cigarette)
BS 5852 - Ignition source
5 (Crib 5)
BS 5852 - Ignition source
1 (Match flame equivalent)
EN 1021-1 (Cigarette)
EN 1021-2 (Match)
TB 117-2013
EU Ecolabel

DIVINA MD (available in 27 colours)



COMPOSITION

100% WO

ABRASION

45000 martindale
lightfastness 6
pilling 3

FIRE RESISTANCE

BS 5852 - Ignition source
0 (Cigarette)
BS 5852 - Ignition source
5 (Crib 5)
BS 5852 - Ignition source
1 (Match flame equivalent)
EN 1021-1 (Cigarette)
EN 1021-2 (Match)
EU Ecolabel

DIVINA MELANGE 3 (available in 49 colours)



COMPOSITION

100% WO

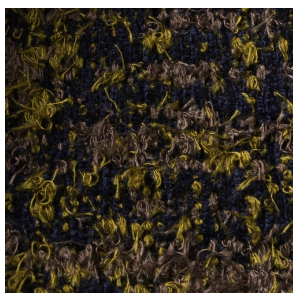
ABRASION

45000 martindale
lightfastness 6 - 7
pilling 3

FIRE RESISTANCE

BS 5852 - Ignition source
0 (Cigarette)
BS 5852 - Ignition source
5 (Crib 5)
BS 5852 - Ignition source
1 (Match flame equivalent)
EN 1021-1 (Cigarette)
EN 1021-2 (Match)
TB 117-2013
EU Ecolabel

Bearded Leopard (available in 3 colours)



COMPOSITION

77% CV, 15% PES, 7% CO,
1% PA

ABRASION

15000 martindale
lightfastness 4 - 6
pilling 4

Calligraphy Bird (available in 4 colours)



COMPOSITION

64% CV, 21% PES, 15%
CO

ABRASION

50000 martindale
lightfastness 4 - 6
pilling 5

Dodo Pavone (available in 3 colours)



COMPOSITION

12% CO, 88% PES

ABRASION

40000 martindale
lightfastness 5
pilling 4 - 5

Memento Moooi Medley (available in 1 colours)



COMPOSITION

100% PES

ABRASION

50000 martindale
lightfastness 4 - 6
pilling 5

FIRE RESISTANCE

EN 1021-1 (Cigarette)
EN 1021-2 (Match)
TB 117-2013

Menagerie of Extinct Animals (available in 2 colours)



COMPOSITION

100% PES

ABRASION

50000 martindale
lightfastness 4 - 6
pilling 5

FIRE RESISTANCE

EN 1021-1 (Cigarette)
EN 1021-2 (Match)
TB 117-2013

Rendezvous Tokyo Blue (available in 1 colours)



COMPOSITION
100% PES

ABRASION
50000 martindale
lightfastness 4 - 6
pilling 5

Blushing Sloth Melange Mohair (available in 1 colours)



COMPOSITION
85% WV, 15% WM

ABRASION
15000 martindale
lightfastness 4 - 6
pilling 2 - 3

Blushing Sloth Woolly Mohair (available in 1 colours)



COMPOSITION
24% PES, 15% PA, 8% CO,
24% WM, 29% WV

ABRASION
40000 martindale
lightfastness 4 - 6
pilling 3 - 4

FIORD (available in 39 colours)

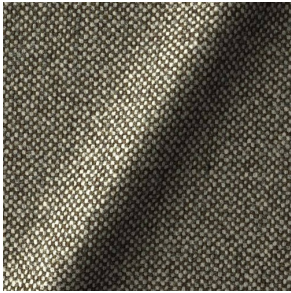


COMPOSITION
92% WV, 8% PA

ABRASION
60000 martindale
lightfastness 6
pilling 4 - 5

FIRE RESISTANCE
EN 1021-1 (Cigarette)
EN 1021-2 (Match)
BS 5852 - Ignition source
0 (Cigarette)
BS 5852 - Ignition source
1 (Match flame equivalent)

HALLINGDAL 65 (available in 58 colours)



COMPOSITION

30% CV, 70% WV

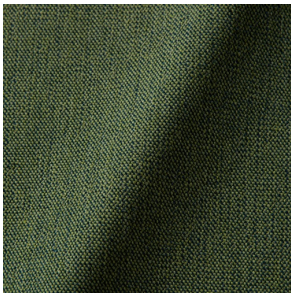
ABRASION

100000 martindale
lightfastness 7
pilling 3 - 4

FIRE RESISTANCE

BS 5852 - Ignition source
0 (Cigarette)
BS 5852 - Ignition source
5 (Crib 5)
BS 5852 - Ignition source
1 (Match flame equivalent)
EN 1021-1 (Cigarette)
EN 1021-2 (Match)
TB 117-2013
EU Ecolabel

JUSTO (available in 11 colours)



COMPOSITION

15% CO, 35% PC, 10% PA,
40% CV

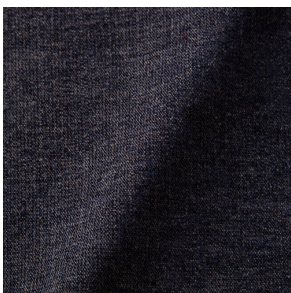
ABRASION

50000 martindale
lightfastness 5
pilling 4

FIRE RESISTANCE

EN 1021-1 (Cigarette)
EN 1021-2 (Match)
TB 117-2013

LISCIO (available in 12 colours)



COMPOSITION

35% WO, 35% CV, 21%
CO, 9% PA

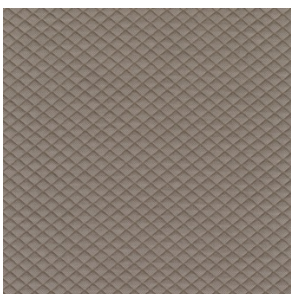
ABRASION

30000 martindale
lightfastness 4 - 6
pilling 4

FIRE RESISTANCE

TB 117-2013

MOSAIC 2 (available in 15 colours)



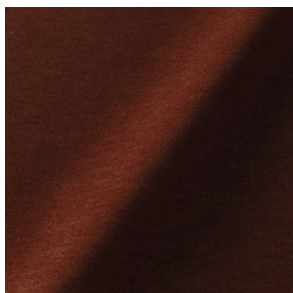
COMPOSITION

58% PES, 27% WV, 9% PA,
6% EA

ABRASION

100000 martindale
lightfastness 6 - 7
pilling 4 - 5

PALETTE (available in 24 colours)



COMPOSITION

42% CO, 29% WO, 29%
TL

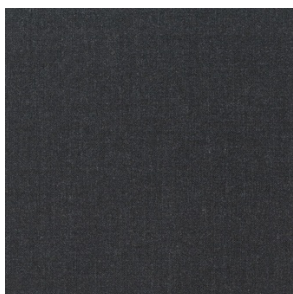
ABRASION

45000 martindale
lightfastness 4 - 5
pilling 3 - 3

FIRE RESISTANCE

BS 5852 - Ignition source
0 (Cigarette)
TB 117-2013
BS 5852 - Ignition source
5 (Crib 5)

REMIX 3 (available in 53 colours)



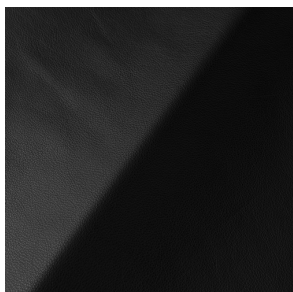
COMPOSITION

10% PA, 90% WV

ABRASION

100000 martindale
lightfastness 5
pilling 4

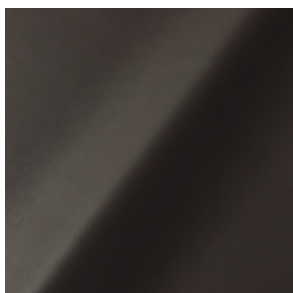
SAVANNE (available in 3 colours)



FIRE RESISTANCE

EN 1021-1 (Cigarette)
EN 1021-2 (Match)
TB 117-2013
OEKO-TEX

SHADE (available in 5 colours)



ABRASION

lightfastness 3 - 4

FIRE RESISTANCE

EN 1021-1 (Cigarette)
EN 1021-2 (Match)
TB 117-2013

SOLIS (available in 9 colours)



COMPOSITION

60% WO, 30% PES, 2%
PA, 3% PC

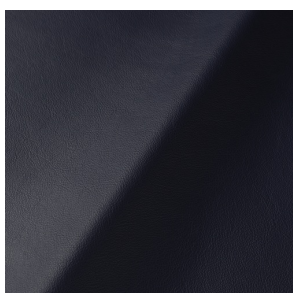
ABRASION

40000 martindale
lightfastness 5
pilling 3 - 4

FIRE RESISTANCE

EN 1021-1 (Cigarette)
EN 1021-2 (Match)
TB 117-2013

SPECTRUM (available in 11 colours)



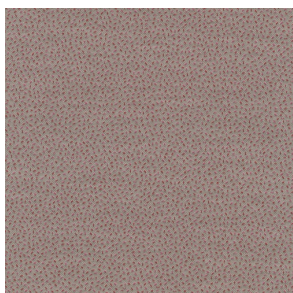
ABRASION

lightfastness 6 - 6

FIRE RESISTANCE

EN 1021-1 (Cigarette)
EN 1021-2 (Match)
TB 117-2013
OEKO-TEX

SPRINKLES (available in 23 colours)



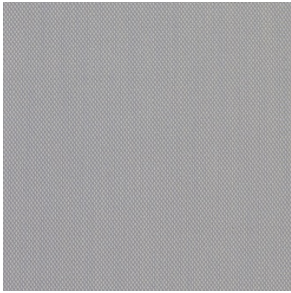
ABRASION

80000 martindale
lightfastness 7
pilling 4

FIRE RESISTANCE

EU Ecolabel
BS 5852 - Ignition source
0 (Cigarette)
BS 5852 - Ignition source
5 (Crib 5)
BS 5852 - Ignition source
1 (Match flame equivalent)
EN 1021-1 (Cigarette)
EN 1021-2 (Match)
TB 117-2013

STEELCUT TRIO 3 (available in 54 colours)



COMPOSITION

90% WV, 10% PA

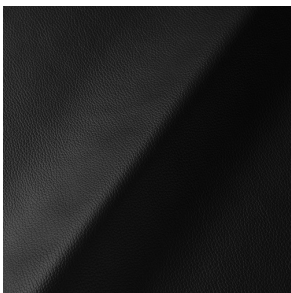
ABRASION

100000 martindale
lightfastness 5
pilling 4

FIRE RESISTANCE

BS 5852 - Ignition source
0 (Cigarette)
BS 5852 - Ignition source
1 (Match flame equivalent)
EN 1021-1 (Cigarette)
EN 1021-2 (Match)
EU Ecolabel

ULTRA (available in 6 colours)



ABRASION

lightfastness 6 - 7

FIRE RESISTANCE

EN 1021-1 (Cigarette)
EN 1021-2 (Match)
TB 117-2013
ANSI/BIFMA M7.1 (Total
Volatile Organic
Compounds)

VESPER (available in 9 colours)



COMPOSITION

10% CO, 40% LI, 10% PA,
10% PES, 30% CV

ABRASION

40000 martindale
lightfastness 5
pilling 4

FIRE RESISTANCE

EN 1021-1 (Cigarette)
EN 1021-2 (Match)
TB 117-2013

m o o o i

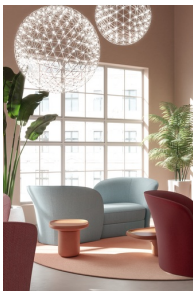
Aldora Vis a Vis

CRISTINA CELESTINO



The Aldora Vis a Vis, designed by Cristina Celestino, adds a touch of natural charm to any commercial or private space. The sculptural backrests are inspired by Milanese decadence and graceful calla lilies. Its dual-sided design offers functional elegance, making it perfect as a freestanding seater. Discover versatility with left/right setups and choose from an array of fabrics and leathers for a personalised touch. Aldora Vis a Vis will invite conversations, engage in style, and elevate any space. The Aldora Vis a Vis is also available as a sofa and chaise longue. Configure the Aldora Vis a Vis to your personal tastes with the online configurator. Choose from a wide selection of fabrics and leathers and discover what it looks like with our AR tool.

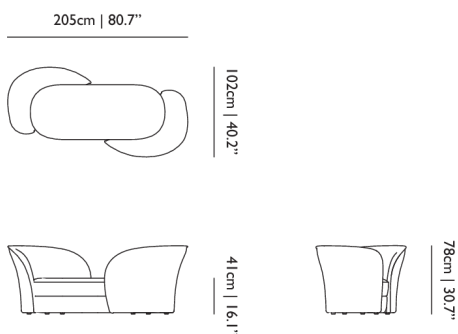
Detailing



Aldora Vis a Vis is perfect for offices and waiting areas. This dual-sided, freestanding design offers functional elegance.

Aldora Vis a Vis / Left

Dimensions



Product

WIDTH 205cm | 80.7"
HEIGHT 78cm | 30.7"
DEPTH 102cm | 40.2"
WEIGHT NETTO 46kg | 101.4lbs

Packaging

WIDTH 85cm | 33.5"
HEIGHT 84cm | 33.1"
CUBAGE 1.48m³ | 52.19ft³
LENGTH 207cm | 81.5"
WEIGHT 59.5kg | 131.17lbs

Technical

MATERIAL

Wood and steel frame, foam over steel springs

WEIGHT CAPACITY

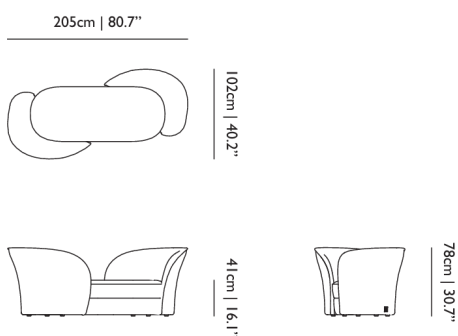
110kg | 242.5lbs

SEATING CAPACITY

2

Aldora Vis a Vis / Right

Dimensions



Product

WIDTH 205cm | 80.7"
HEIGHT 78cm | 30.7"
DEPTH 102cm | 40.2"
WEIGHT NETTO 46kg | 101.4lbs

Packaging

WIDTH 85cm | 33.5"
HEIGHT 84cm | 33.1"
CUBAGE 1.48m³ | 52.19ft³
LENGTH 207cm | 81.5"
WEIGHT 59.5kg | 131.17lbs

Technical

MATERIAL

Wood and steel frame, foam over steel springs

WEIGHT CAPACITY

110kg | 242.51lbs

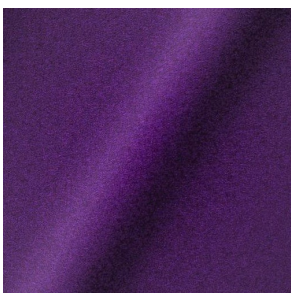
SEATING CAPACITY

2

Upholstery

ABBRACCI (available in 6 colours)**COMPOSITION**

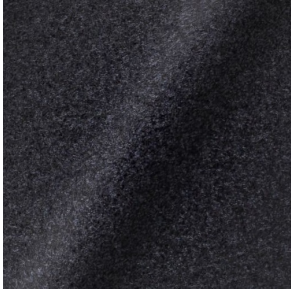
100% PES

ABRASION30000 martindale
lightfastness 3 - 4
pilling 5**FIRE RESISTANCE**BS 5852 - Ignition source
0 (Cigarette)
BS 5852 - Ignition source
1 (Match flame equivalent)
EN 1021-1 (Cigarette)
EN 1021-2 (Match)
TB 117-2013*ARDA (available in 12 colours)***ABRASION**50000 martindale
lightfastness 5 - 6
pilling 4 - 5**FIRE RESISTANCE**BS 5852 - Ignition source
0 (Cigarette)
BS 5852 - Ignition source
5 (Crib 5)
BS 5852 - Ignition source
1 (Match flame equivalent)
EN 1021-1 (Cigarette)
EN 1021-2 (Match)
TB 117-2013
EU Ecolabel*DIVINA 3 (available in 56 colours)***COMPOSITION**

100% WO

ABRASION45000 martindale
lightfastness 7
pilling 3**FIRE RESISTANCE**BS 5852 - Ignition source
0 (Cigarette)
BS 5852 - Ignition source
5 (Crib 5)
BS 5852 - Ignition source
1 (Match flame equivalent)
EN 1021-1 (Cigarette)
EN 1021-2 (Match)
TB 117-2013
EU Ecolabel

DIVINA MD (available in 27 colours)

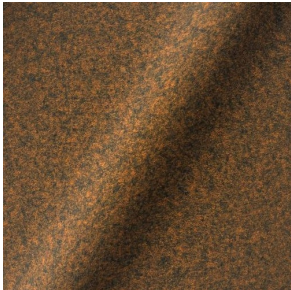


COMPOSITION
100% WO

ABRASION
45000 martindale
lightfastness 6
pilling 3

FIRE RESISTANCE
BS 5852 - Ignition source
0 (Cigarette)
BS 5852 - Ignition source
5 (Crib 5)
BS 5852 - Ignition source
1 (Match flame equivalent)
EN 1021-1 (Cigarette)
EN 1021-2 (Match)
EU Ecolabel

DIVINA MELANGE 3 (available in 49 colours)

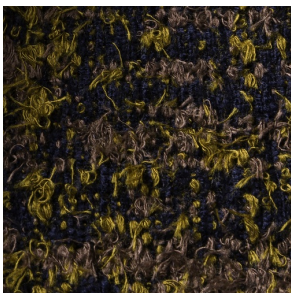


COMPOSITION
100% WO

ABRASION
45000 martindale
lightfastness 6 - 7
pilling 3

FIRE RESISTANCE
BS 5852 - Ignition source
0 (Cigarette)
BS 5852 - Ignition source
5 (Crib 5)
BS 5852 - Ignition source
1 (Match flame equivalent)
EN 1021-1 (Cigarette)
EN 1021-2 (Match)
TB 117-2013
EU Ecolabel

Bearded Leopard (available in 3 colours)



COMPOSITION
77% CV, 15% PES, 7% CO,
1% PA

ABRASION
15000 martindale
lightfastness 4 - 6
pilling 4

Calligraphy Bird (available in 4 colours)



COMPOSITION

64% CV, 21% PES, 15%
CO

ABRASION

50000 martindale
lightfastness 4 - 6
pilling 5

Dodo Pavone (available in 3 colours)



COMPOSITION

12% CO, 88% PES

ABRASION

40000 martindale
lightfastness 5
pilling 4 - 5

Memento Moooi Medley (available in 1 colours)



COMPOSITION

100% PES

ABRASION

50000 martindale
lightfastness 4 - 6
pilling 5

FIRE RESISTANCE

EN 1021-1 (Cigarette)
EN 1021-2 (Match)
TB 117-2013

Menagerie of Extinct Animals (available in 2 colours)



COMPOSITION

100% PES

ABRASION

50000 martindale
lightfastness 4 - 6
pilling 5

FIRE RESISTANCE

EN 1021-1 (Cigarette)
EN 1021-2 (Match)
TB 117-2013

Rendezvous Tokyo Blue (available in 1 colours)



COMPOSITION
100% PES

ABRASION
50000 martindale
lightfastness 4 - 6
pilling 5

Blushing Sloth Melange Mohair (available in 1 colours)



COMPOSITION
85% WV, 15% WM

ABRASION
15000 martindale
lightfastness 4 - 6
pilling 2 - 3

Blushing Sloth Woolly Mohair (available in 1 colours)



COMPOSITION
24% PES, 15% PA, 8% CO,
24% WM, 29% WV

ABRASION
40000 martindale
lightfastness 4 - 6
pilling 3 - 4

FIORD (available in 39 colours)

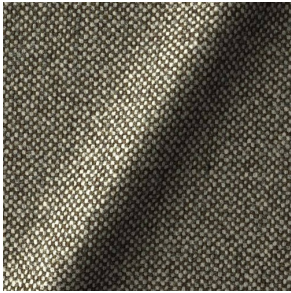


COMPOSITION
92% WV, 8% PA

ABRASION
60000 martindale
lightfastness 6
pilling 4 - 5

FIRE RESISTANCE
EN 1021-1 (Cigarette)
EN 1021-2 (Match)
BS 5852 - Ignition source
0 (Cigarette)
BS 5852 - Ignition source
1 (Match flame equivalent)

HALLINGDAL 65 (available in 58 colours)



COMPOSITION

30% CV, 70% WV

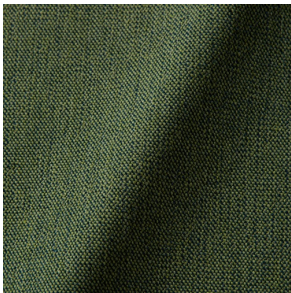
ABRASION

100000 martindale
lightfastness 7
pilling 3 - 4

FIRE RESISTANCE

BS 5852 - Ignition source
0 (Cigarette)
BS 5852 - Ignition source
5 (Crib 5)
BS 5852 - Ignition source
1 (Match flame equivalent)
EN 1021-1 (Cigarette)
EN 1021-2 (Match)
TB 117-2013
EU Ecolabel

JUSTO (available in 11 colours)



COMPOSITION

15% CO, 35% PC, 10% PA,
40% CV

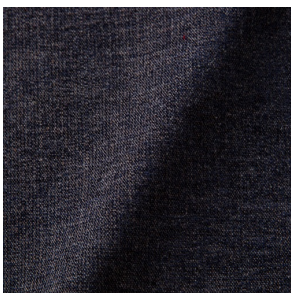
ABRASION

50000 martindale
lightfastness 5
pilling 4

FIRE RESISTANCE

EN 1021-1 (Cigarette)
EN 1021-2 (Match)
TB 117-2013

LISCIO (available in 12 colours)



COMPOSITION

35% WO, 35% CV, 21%
CO, 9% PA

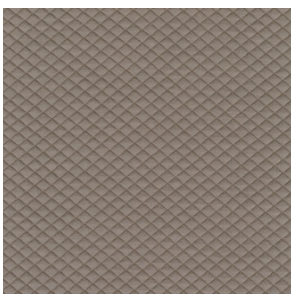
ABRASION

30000 martindale
lightfastness 4 - 6
pilling 4

FIRE RESISTANCE

TB 117-2013

MOSAIC 2 (available in 15 colours)



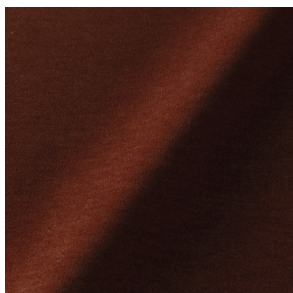
COMPOSITION

58% PES, 27% WV, 9% PA,
6% EA

ABRASION

100000 martindale
lightfastness 6 - 7
pilling 4 - 5

PALETTE (available in 24 colours)



COMPOSITION

42% CO, 29% WO, 29%
TL

ABRASION

45000 martindale
lightfastness 4 - 5
pilling 3 - 3

FIRE RESISTANCE

BS 5852 - Ignition source
0 (Cigarette)
TB 117-2013
BS 5852 - Ignition source
5 (Crib 5)

REMIX 3 (available in 53 colours)



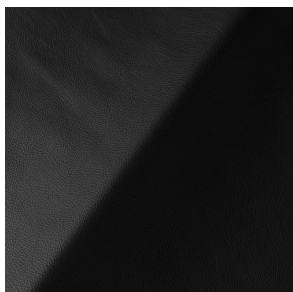
COMPOSITION

10% PA, 90% WV

ABRASION

100000 martindale
lightfastness 5
pilling 4

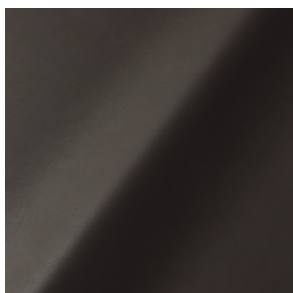
SAVANNE (available in 3 colours)



FIRE RESISTANCE

EN 1021-1 (Cigarette)
EN 1021-2 (Match)
TB 117-2013
OEKO-TEX

SHADE (available in 5 colours)



ABRASION

lightfastness 3 - 4

FIRE RESISTANCE

EN 1021-1 (Cigarette)
EN 1021-2 (Match)
TB 117-2013

SOLIS (available in 9 colours)



COMPOSITION

60% WO, 30% PES, 2%
PA, 3% PC

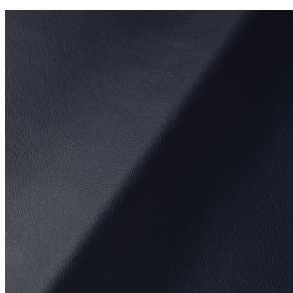
ABRASION

40000 martindale
lightfastness 5
pilling 3 - 4

FIRE RESISTANCE

EN 1021-1 (Cigarette)
EN 1021-2 (Match)
TB 117-2013

SPECTRUM (available in 11 colours)



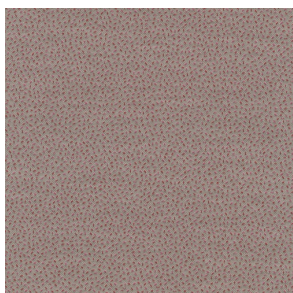
ABRASION

lightfastness 6 - 6

FIRE RESISTANCE

EN 1021-1 (Cigarette)
EN 1021-2 (Match)
TB 117-2013
OEKO-TEX

SPRINKLES (available in 23 colours)



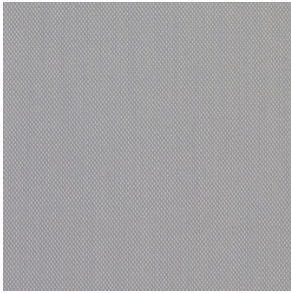
ABRASION

80000 martindale
lightfastness 7
pilling 4

FIRE RESISTANCE

EU Ecolabel
BS 5852 - Ignition source
0 (Cigarette)
BS 5852 - Ignition source
5 (Crib 5)
BS 5852 - Ignition source
1 (Match flame equivalent)
EN 1021-1 (Cigarette)
EN 1021-2 (Match)
TB 117-2013

STEELCUT TRIO 3 (available in 54 colours)



COMPOSITION

90% WV, 10% PA

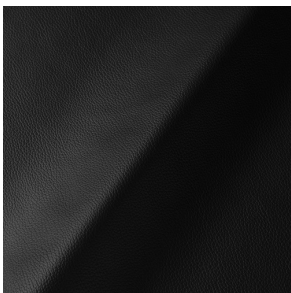
ABRASION

100000 martindale
lightfastness 5
pilling 4

FIRE RESISTANCE

BS 5852 - Ignition source
0 (Cigarette)
BS 5852 - Ignition source
1 (Match flame equivalent)
EN 1021-1 (Cigarette)
EN 1021-2 (Match)
EU Ecolabel

ULTRA (available in 6 colours)



ABRASION

lightfastness 6 - 7

FIRE RESISTANCE

EN 1021-1 (Cigarette)
EN 1021-2 (Match)
TB 117-2013
ANSI/BIFMA M7.1 (Total
Volatile Organic
Compounds)

VESPER (available in 9 colours)



COMPOSITION

10% CO, 40% LI, 10% PA,
10% PES, 30% CV

ABRASION

40000 martindale
lightfastness 5
pilling 4

FIRE RESISTANCE

EN 1021-1 (Cigarette)
EN 1021-2 (Match)
TB 117-2013

Aldora Chaise Longue

CRISTINA CELESTINO



The Aldora Chaise Longue, by Cristina Celestino, is available with a wing on either left or right side. The seater is a contemporary spin on a classical concept. The soft feminine shapes are inspired by the graceful petals of calla lilies and has the allure of Milanese bourgeois decadence. With the Aldora Chaise Longue, Cristina Celestino created an iconic piece with a wide range of inspirations and a subtle nod to her heritage. The Aldora Chaise Longue is also available as a sofa with wings on both sides. Configure the Aldora Chaise Longue to your personal tastes with the online configurator. Choose from a wide selection of fabrics and leathers and discover what it looks like with our AR tool.

Detailing



With its contemporary spin on a classical concept, and availability in multiple configurations, Aldora finds its way in any modern-day interior

Colours

Aldora Chaise Longue / Left

Dimensions

179cm | 70.5"



83cm | 32.7"



41cm | 16.1"



78cm | 30.7"

Product

WIDTH 179cm | 70.5"

HEIGHT 78cm | 30.7"

DEPTH 83cm | 32.7"

WEIGHT NETTO 59kg | 130.07lbs

Packaging

WIDTH 105cm | 41.3"

HEIGHT 75cm | 29.5"

CUBAGE 1.61m³ | 57.01ft³

LENGTH 205cm | 80.7"

WEIGHT 46.5kg | 102.51lbs

Technical

MATERIAL

Wood and steel frame, foam over steel springs

HEIGHT ARMREST

78cm | 30.7"

SEAT HEIGHT

41cm | 16.1"

WEIGHT CAPACITY

110kg | 242.51lbs

SEAT DEPTH

60cm | 23.6"

SEAT WIDTH

150cm | 59.1"

SEATING CAPACITY

1

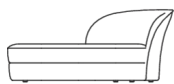
Aldora Chaise Longue / Right

Dimensions

179cm | 70.5"



83cm | 32.7"



41cm | 16.1"



78cm | 30.7"

Product

WIDTH 179cm | 70.5"

HEIGHT 78cm | 30.7"

DEPTH 83cm | 32.7"

WEIGHT NETTO 59kg | 130.07lbs

Packaging

WIDTH 105cm | 41.3"

HEIGHT 75cm | 29.5"

CUBAGE 1.61m³ | 57.01ft³

LENGTH 205cm | 80.7"

WEIGHT 46.5kg | 102.51lbs

Technical

MATERIAL

Wood and steel frame, foam over steel springs

HEIGHT ARMREST

78cm | 30.7"

SEAT HEIGHT

41cm | 16.1"

WEIGHT CAPACITY

110kg | 242.5lbs

SEAT DEPTH

60cm | 23.6"

SEAT WIDTH

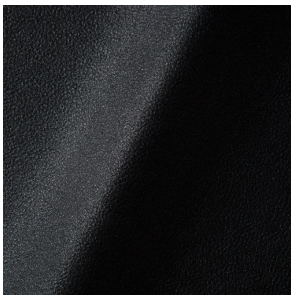
150cm | 59.1"

SEATING CAPACITY

1

Upholstery

ABBRACCI (available in 6 colours)



COMPOSITION

100% PES

ABRASION

30000 martindale
lightfastness 3 - 4
pilling 5

FIRE RESISTANCE

BS 5852 - Ignition source
0 (Cigarette)
BS 5852 - Ignition source
1 (Match flame equivalent)
EN 1021-1 (Cigarette)
EN 1021-2 (Match)
TB 117-2013

ARDA (available in 12 colours)



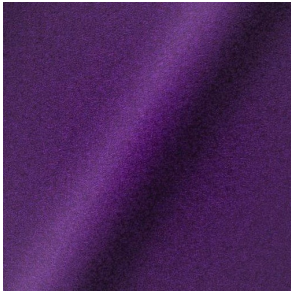
ABRASION

50000 martindale
lightfastness 5 - 6
pilling 4 - 5

FIRE RESISTANCE

BS 5852 - Ignition source
0 (Cigarette)
BS 5852 - Ignition source
5 (Crib 5)
BS 5852 - Ignition source
1 (Match flame equivalent)
EN 1021-1 (Cigarette)
EN 1021-2 (Match)
TB 117-2013
EU Ecolabel

DIVINA 3 (available in 56 colours)



COMPOSITION
100% WO

ABRASION
45000 martindale
lightfastness 7
pilling 3

FIRE RESISTANCE
BS 5852 - Ignition source
0 (Cigarette)
BS 5852 - Ignition source
5 (Crib 5)
BS 5852 - Ignition source
1 (Match flame equivalent)
EN 1021-1 (Cigarette)
EN 1021-2 (Match)
TB 117-2013
EU Ecolabel

DIVINA MD (available in 27 colours)



COMPOSITION
100% WO

ABRASION
45000 martindale
lightfastness 6
pilling 3

FIRE RESISTANCE
BS 5852 - Ignition source
0 (Cigarette)
BS 5852 - Ignition source
5 (Crib 5)
BS 5852 - Ignition source
1 (Match flame equivalent)
EN 1021-1 (Cigarette)
EN 1021-2 (Match)
EU Ecolabel

DIVINA MELANGE 3 (available in 49 colours)



COMPOSITION
100% WO

ABRASION
45000 martindale
lightfastness 6 - 7
pilling 3

FIRE RESISTANCE
BS 5852 - Ignition source
0 (Cigarette)
BS 5852 - Ignition source
5 (Crib 5)
BS 5852 - Ignition source
1 (Match flame equivalent)
EN 1021-1 (Cigarette)
EN 1021-2 (Match)
TB 117-2013
EU Ecolabel

Bearded Leopard (available in 3 colours)



COMPOSITION

77% CV, 15% PES, 7% CO,
1% PA

ABRASION

15000 martindale
lightfastness 4 - 6
pilling 4

Calligraphy Bird (available in 4 colours)



COMPOSITION

64% CV, 21% PES, 15%
CO

ABRASION

50000 martindale
lightfastness 4 - 6
pilling 5

Dodo Pavone (available in 3 colours)



COMPOSITION

12% CO, 88% PES

ABRASION

40000 martindale
lightfastness 5
pilling 4 - 5

Memento Moooi Medley (available in 1 colours)



COMPOSITION

100% PES

ABRASION

50000 martindale
lightfastness 4 - 6
pilling 5

FIRE RESISTANCE

EN 1021-1 (Cigarette)
EN 1021-2 (Match)
TB 117-2013

Menagerie of Extinct Animals (available in 2 colours)



COMPOSITION

100% PES

ABRASION

50000 martindale
lightfastness 4 - 6
pilling 5

FIRE RESISTANCE

EN 1021-1 (Cigarette)
EN 1021-2 (Match)
TB 117-2013

Rendezvous Tokyo Blue (available in 1 colours)



COMPOSITION

100% PES

ABRASION

50000 martindale
lightfastness 4 - 6
pilling 5

Blushing Sloth Melange Mohair (available in 1 colours)



COMPOSITION

85% WV, 15% WM

ABRASION

15000 martindale
lightfastness 4 - 6
pilling 2 - 3

Blushing Sloth Woolly Mohair (available in 1 colours)



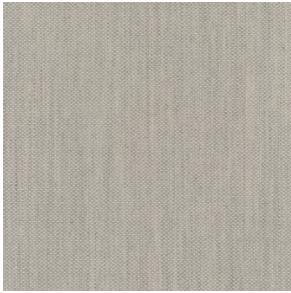
COMPOSITION

24% PES, 15% PA, 8% CO,
24% WM, 29% WV

ABRASION

40000 martindale
lightfastness 4 - 6
pilling 3 - 4

FIORD (available in 39 colours)



COMPOSITION

92% WV, 8% PA

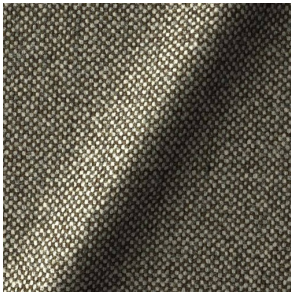
ABRASION

60000 martindale
lightfastness 6
pilling 4 - 5

FIRE RESISTANCE

EN 1021-1 (Cigarette)
EN 1021-2 (Match)
BS 5852 - Ignition source
0 (Cigarette)
BS 5852 - Ignition source
1 (Match flame equivalent)

HALLINGDAL 65 (available in 58 colours)



COMPOSITION

30% CV, 70% WV

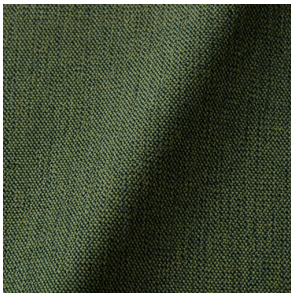
ABRASION

100000 martindale
lightfastness 7
pilling 3 - 4

FIRE RESISTANCE

BS 5852 - Ignition source
0 (Cigarette)
BS 5852 - Ignition source
5 (Crib 5)
BS 5852 - Ignition source
1 (Match flame equivalent)
EN 1021-1 (Cigarette)
EN 1021-2 (Match)
TB 117-2013
EU Ecolabel

JUSTO (available in 11 colours)



COMPOSITION

15% CO, 35% PC, 10% PA,
40% CV

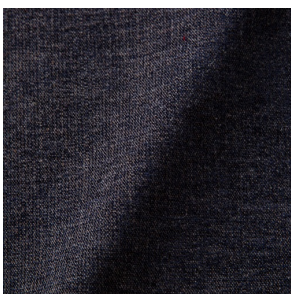
ABRASION

50000 martindale
lightfastness 5
pilling 4

FIRE RESISTANCE

EN 1021-1 (Cigarette)
EN 1021-2 (Match)
TB 117-2013

LISCIO (available in 12 colours)



COMPOSITION

35% WO, 35% CV, 21%
CO, 9% PA

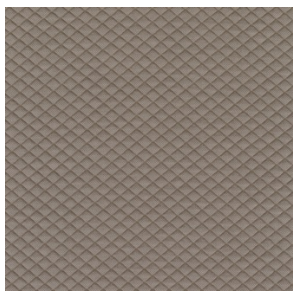
ABRASION

30000 martindale
lightfastness 4 - 6
pilling 4

FIRE RESISTANCE

TB 117-2013

MOSAIC 2 (available in 15 colours)



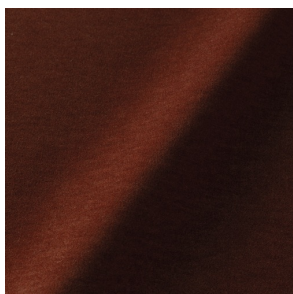
COMPOSITION

58% PES, 27% WV, 9% PA,
6% EA

ABRASION

100000 martindale
lightfastness 6 - 7
pilling 4 - 5

PALETTE (available in 24 colours)



COMPOSITION

42% CO, 29% WO, 29%
TL

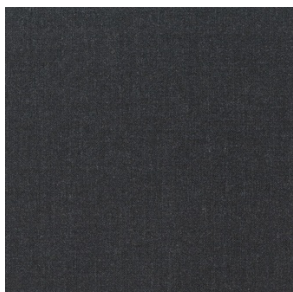
ABRASION

45000 martindale
lightfastness 4 - 5
pilling 3 - 3

FIRE RESISTANCE

BS 5852 - Ignition source
0 (Cigarette)
TB 117-2013
BS 5852 - Ignition source
5 (Crib 5)

REMIX 3 (available in 53 colours)



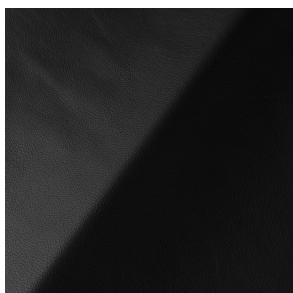
COMPOSITION

10% PA, 90% WV

ABRASION

100000 martindale
lightfastness 5
pilling 4

SAVANNE (available in 3 colours)



FIRE RESISTANCE

EN 1021-1 (Cigarette)
EN 1021-2 (Match)
TB 117-2013
OEKO-TEX

SHADE (available in 5 colours)



ABRASION

lightfastness 3 - 4

FIRE RESISTANCE

EN 1021-1 (Cigarette)
EN 1021-2 (Match)
TB 117-2013

SOLIS (available in 9 colours)



COMPOSITION

60% WO, 30% PES, 2%
PA, 3% PC

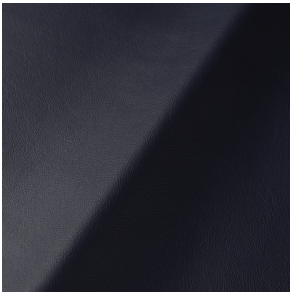
ABRASION

40000 martindale
lightfastness 5
pilling 3 - 4

FIRE RESISTANCE

EN 1021-1 (Cigarette)
EN 1021-2 (Match)
TB 117-2013

SPECTRUM (available in 11 colours)



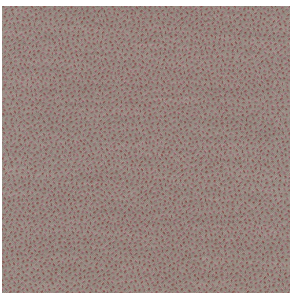
ABRASION

lightfastness 6 - 6

FIRE RESISTANCE

EN 1021-1 (Cigarette)
EN 1021-2 (Match)
TB 117-2013
OEKO-TEX

SPRINKLES (available in 23 colours)



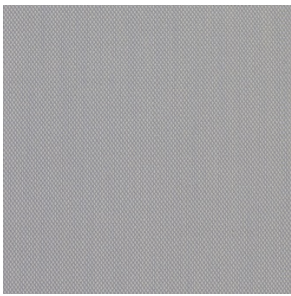
ABRASION

80000 martindale
lightfastness 7
pilling 4

FIRE RESISTANCE

EU Ecolabel
BS 5852 - Ignition source
0 (Cigarette)
BS 5852 - Ignition source
5 (Crib 5)
BS 5852 - Ignition source
1 (Match flame equivalent)
EN 1021-1 (Cigarette)
EN 1021-2 (Match)
TB 117-2013

STEELCUT TRIO 3 (available in 54 colours)



COMPOSITION

90% WV, 10% PA

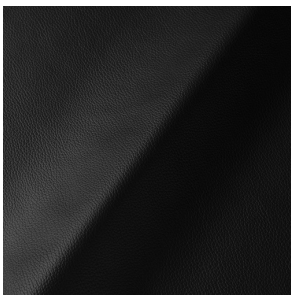
ABRASION

100000 martindale
lightfastness 5
pilling 4

FIRE RESISTANCE

BS 5852 - Ignition source
0 (Cigarette)
BS 5852 - Ignition source
1 (Match flame equivalent)
EN 1021-1 (Cigarette)
EN 1021-2 (Match)
EU Ecolabel

ULTRA (available in 6 colours)



ABRASION

lightfastness 6 - 7

FIRE RESISTANCE

EN 1021-1 (Cigarette)
EN 1021-2 (Match)
TB 117-2013
ANSI/BIFMA M7.1 (Total
Volatile Organic
Compounds)

VESPER (available in 9 colours)



COMPOSITION

10% CO, 40% LI, 10% PA,
10% PES, 30% CV

ABRASION

40000 martindale
lightfastness 5
pilling 4

FIRE RESISTANCE

EN 1021-1 (Cigarette)
EN 1021-2 (Match)
TB 117-2013